

®

Indocore Engineering Corporation

ELASTOMER AND SEAL PRODUCTS

Your engineering partner



Indocore Engineering Corporation

We offers you various range of industrial items for all your process handling needs. Indocore Engineering strength is quality products at affordable prices, prompt delivery and the unflinching commitment to excel. The products have been enjoying a sustained presence in the national for over last 10 years in chemical and process industries.

Indocore Engineering Products are widely used in chemical & Process industries, Refineries, Petrochemicals & Fertilizer Plants, Pharmaceuticals, Oil Exploration, Thermal & Nuclear Plants, Food & Beverage industries, Effluent Treatment & Sewerage Plants, Water Treatment, Cooling water & Water supply plants, Mining Industries etc.

The Company was founded in Year 1998. Indocore Engineering achieved reputation and trust within a very short span. Thanks to our user friendly direct marketing, far sighted & honest business policy.

ALL KINDS OF INDUSTRIAL PRODUCTS AS PER BELOW GIVEN LIST AND ENGINEERING MACHINED JOBS AS PER YOUR DRAWING AND REQUIREMENTS.

*We now request you to register our name in the approved list of vendors and look forward to receive your valued enquiries and orders.
Thanking you and looking forward to an everlasting cooperation with you.*

We are enclosing herewith our Leaflet, Company profile & client list product profile .

*Thanking YOU,
For Indocore Engineering Corporation
Vishal Sharma
(Business Promoter)
[mail:- info@indocoreengineering.com]*

Index

Pharma Rubber Products	03
General Rubber Products	05
Ready Cut Gaskets / Packing Seals	06
All Types of Hoses and Bellows	07
All Types of Mechanical Seals	08

PHARMA RUBBER PRODUCTS

PRP-101



SILICONE SIFTER AND AUTOCLAVE GASKET

PRP-102



SILICONE SPONGE GASKETS

PRP-103



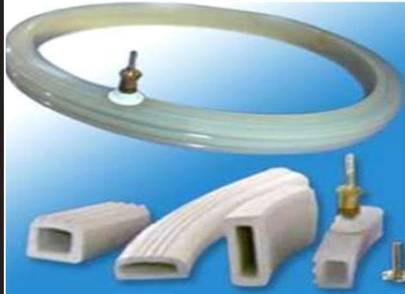
SILICON TRICLOVER END GASKET

PRP-104



SILICONE INFLATABLE GASKET / FBD GASKETS

PRP-105



SILICONE INFLATABLE GASKET / FBD GASKETS

PRP-106



BOTTLE STOPPER

PRP-107



SEPTA

PRP-108



NEOPREAN / SILICONE RUBBER SHEET

PRP-109



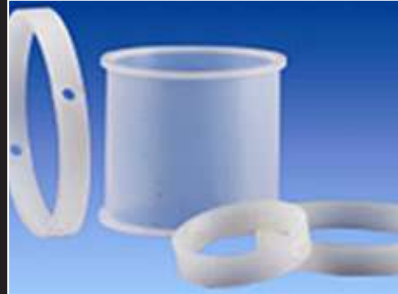
SILICON BRAIDED HOSES TRICLOVER END

PRP-110



SANITARY "O" RINGS

PRP-111



BUTTERFLY/IRIS VALVE GASKET

PRP-112



SILICONE TRANSPARENT TUBING

PRP-113



PRP-114



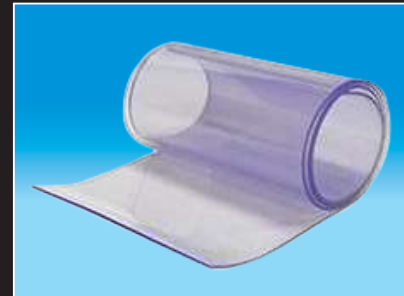
SQUARE AND ROUND CORD

PRP-115



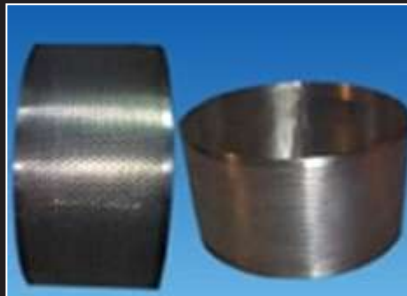
ALL TYPES OF TEFLON AND PP PRODUCTS

PRP-116



PVC SHEET/ PVC CURTAIN

PRP-117



MULTIMILL MACHINE SIEVES

PRP-118



SS316 LEAD FREE CO MILL SIEVES

PRP-119



SS316 LEAD FREE CADMILL SIEVES

PRP-120



SS316 LEAD FREE MULTIMILL SIEVES

PRP-121



SS316 LEAD FREE TEST SIEVES

PRP-122



VIBRO SIFTER MACHIN SLEEVE

PRP-123



PVC SINGLE WIRE FOOD GRADE HOSE

PRP-124



SS BRAIDED / TEFLON LINED HOSE

GENERAL RUBBER PRODUCTS

GRP-101



FULL FACE FLANGE GASKET

GRP-102



ELECTRICAL RUBBER MATS

GRP-103



PU /RUBBER ROLLER

GRP-104



CONVEYOR BELT

GRP-105



RUBBER MOLDED PRODUCTS

GRP-106



ALL TYPES OF RUBBER PROFILE

GRP-107



RUBBER BELLOW

GRP-108



ANTI VIBRATION PADS

GRP-109



METAL BONDED RUBBER PRODUCTS

GRP-110



RUBBER /TEFLON LINED DIAPHRAGM

GRP-111



RUBBER MOLDED WHEEL

GRP-112



ALL TYPES OF OIL SEAL

READY CUT GASKETS / PACKING SEALS

RCG-101



CAF AND ASBESTOS FREE RING GASKET

RCG-102



SPIRAL WOUND GASKET

RCG-103



TEFLON ENVELOP GASKET WITH RUBBER INSERT

RCG-104



TEFLON ENVELOP GASKET WITH CAF INSERT

RCG-105



GRAPHITED GLAND ROPE

RCG-106



PTFE GLAND ROPE

RCG-107



JOINTING SHEETS

RCG-108



RUBBER WATER STOPPER

RCG-109



CORK SHEET

RCG-110



PTFE EXPANDED GASKET

RCG-111



PTFE (TEFLON) TAPE

RCG-112



HIGH PRESSURE GRAPHITE RING

ALL TYPES OF HOSES AND BELLOWS

HB-101



TANKE LOADING UNLOADING HOSE

HB-102



CHEMICAL HOSE

HB-103



WATER / STEAM HOSE

HB-104



HYDRULLIC / PNUMATIC HOSE

HB-105



PVC SUCTION HOSE

HB-106



PVC BRAIDED HOSE

HB-107



PVC AIR DUCT HOSE

HB-108



FIRE FIGHTING HOSE

HB-109



RUBBER BELLOWS

HB-110



TEFLON BELLOWS

HB-111



SS EXPANSSION BELLOWS

HB-112



SS WIRE BRAIDED HOSE

ALL TYPES OF MECHANICAL SEALS

This type RUBBER BELLOW SEAL is generally used in sewage applications, waste water pumps, & fuel injection pumps.

IEC-101



Materials :

Seal Faces: Sic. / carbon / Vs Ceramic / Sic .

Secondary Seals: Niton / Viton / EPDM

Metal Parts: SS-304, SS-316, SS-316 L

IEC-102



Operating Limits :

Shaft Diameter: 10 mm to 100 mm

Pressure: 10 Bars (max)

Temperature: (-) 20°C to (+) 150°C

This type TEFLON BELLOW SEAL is generally used in acids, alkalis & extremely corrosive services.

IEC-201



Materials :

Seal Faces: GFT / Sic. / Carbon Vs Ceramic / Sic

Secondary Seals: PTFE / GFT

Metal Parts: SS-304, SS-316, SS-316 L / Hastelloy

IEC-202



Operating Limits :

Shaft Diameter: 16 mm to 100 mm

Pressure: 5 Bars (max)

Temperature: (-) 20°C to (+) 90°C

Speed: 2900 rpm (Max)

This type WELDED END METAL BELLOW SEAL is generally used for handling highly corrosive chemicals high Temperatures applications

IEC-301



Materials :

Seal Faces: Carbon / Sic. / TC Vs Sic. / TC

Secondary Seals: Viton / PTFE / GFT

Metal Parts: SS-304, SS-316, SS-316 L, Hastelloy "C"

IEC-302



Operating Limits :

Shaft Diameter: 19 mm to 100 mm

Pressure: 15 Bars (max)

Temperature: (-) 50°C to (+) 350°C

Speed: 3200 rpm (Max)

This type SINGLE SPRING SEAL is generally used in high pressure pumps, refineries, fertilizers, nuclear plants & petroleum products.

IEC-401



Materials :

Seal Faces: Sic. / carbon Vs Sic. / Ceramic / TC

Secondary Seals: Viton / PTFE / GFT

Metal Parts: SS-304, SS-316, SS-316 L

IEC-402



Operating Limits :

Shaft Diameter: 10 mm to 150 mm

Pressure: 10 Bars (max)

Temperature: (-) 50°C to (+) 180°C

Speed: 1500 rpm (Max)

This type MULTI SPRING SEAL is generally used in ash slurry pulp, clinker grinder, sludge & syrup

IEC-501



Materials :

Seal Faces: Sic / Ceramic / Carbon TC Vs Ceramic / TC / Sci

Secondary Seals: Elastomers, FEP, PTFE, GFT

Metal Parts: SS-316, SS-316 L, SS-304

IEC-502



Operating Limits :

Shaft Diameter: 18 mm to 100 mm

Pressure: 25 Bars (max)

Temperature: (-) 20°C to (+) 220°C

This type MULTI SPRING SEAL is generally used for handling corrosive chemicals, hydrocarbons, general & light chemicals.

IEC-601



Materials :

Seal Faces: Sic. / carbon / TC Vs Ceramic / Sic. / TC

Secondary Seals: Viton / FEP

Metal Parts: SS-304, SS-316, SS-316 L

IEC-602



Operating Limits :

Shaft Diameter: 20 mm to 100 mm

Pressure: 10 Bars (max)

Temperature: (-) 50°C to (+) 180°C

Speed: 2900 rpm (Max)

This type CONICAL SPRING SEAL is generally used for handling corrosive chemicals, hydrocarbons, general & light chemicals.

IEC-701



Materials :

Seal Faces: Sic. / carbon / TC Vs Ceramic / Sic. / TC

Secondary Seals: Viton / PTFE / GFT

Metal Parts: SS-316, SS-316 L, SS-304

IEC-702



Operating Limits :

Shaft Diameter: 10 mm to 100 mm

Pressure: 10 Bars (max)

Temperature: (-) 20°C to (+) 180°C

This type TEXTILE SEAL is generally used in Dyeing & Printing Textile Machineries

IEC-801



Materials :

Seal Faces: Sic. / carbon / TC Vs Ceramic / Sic. / TC

Secondary Seals: Viton / EPDM /

Metal Parts: SS-316, 304, 316 L,,

IEC-802



John Crane 502 Seal

IEC-803



Operating Limits :

Shaft Diameter: 14 mm to 150 mm

Pressure: 10 Bars (max)

Temperature: (-) 50°C to (+) 280°C

Speed: 2900 rpm (Max)

This type CARTRIDGE SEAL is generally used in chemicals, solvents, hydrocarbons & petrochemicals

IEC-901



Materials :

Seal Faces: Sic. / TC / Ceramic Vs Ceramic / Sic. / TC

Secondary Seals: Viton / PTFE / GFT / Niton

Metal Parts: SS-316, 304, 316 L, Hastelloy

IEC-902



Operating Limits :

Shaft Diameter: 25 mm to 100 mm

Pressure: 15 Bars (max)

Temperature: (-) 40°C to (+) 180°C

Speed: 2900 rpm (Max)

This type ALFA LEVEL SEAL is generally used in hot & cold-water pumps, oil pumps refrigeration compressor & fuel injection pumps.

IEC-1001



Materials :

Seal Faces: Sic. / carbon Vs Ceramic / Sic. / TC

Secondary Seals: Niton / Viton

Metal Parts: SS-316, SS-304

IEC-1002



Operating Limits :

Shaft Diameter: 10 mm to 100 mm

Pressure: 10 Bars (max)

Temperature: (-) 20°C to (+) 150°C

Speed: 2500 rpm (Max)

This type WAVE SPRING SEAL is generally used in paper industries, petrochemicals & petroleum refineries.

IEC-1101



Materials :

Seal Faces: Sic / Ceramic / Carbon Vs Ceramic / TC / Sic

Secondary Seals: Viton / FEP / GRAPHOIL

Metal Parts: SS-316, SS-304, GRAPHOIL

IEC-1102



Operating Limits :

Shaft Diameter: 25 mm to 150 mm

Pressure: 15 Bars (max)

Temperature: (-) 50°C to (+) 180°C

IEC-1201



Materials :

Seal Faces: Carbon / TC Sic. Vs Ceramic / Sic. / TC

Secondary Seals: Viton / PTFE / GFT

Metal Parts: SS-316, 904L, Alloy 20, Hastelloy

IEC-1202



Operating Limits :

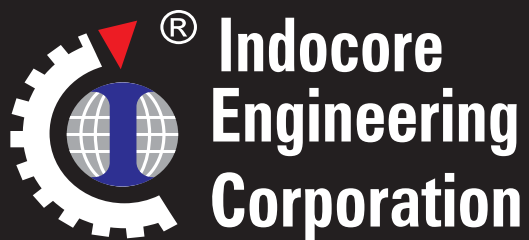
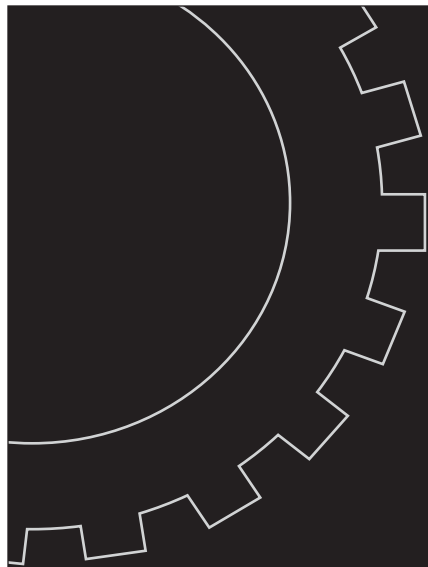
Shaft Diameter: 16 mm to 150 mm

Pressure: 10 Bars (max)

Temperature: (-) 50°C to (+) 280°C

Speed: 2900 rpm (Max)





110, Sheeba Complex Nr. Regal Cinema, M.G. Road, INDORE -1 M.P. INDIA,
Ph. : 0731-4041337, 4042337, 4042737, Cell : 98266-42337
E-mail : info@indocoreengineering.com; WebSite : www.indocoreengineering.com